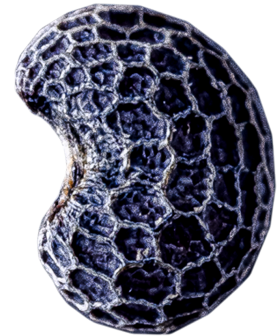




**BLUE
POPPY
SEED**



Scientific name: *Papaver somniferum*

ORGANIC POPPY SEED

CHARACTERISTICS

| | |
|------------|---|
| Appearance | The healthy, clean, same variety |
| Colour | Blue |
| Odour | Pure, natural, typical for poppy seed, free of chemical smell |

PHYSICAL & CHEMICAL PROPERTIES

| | |
|-------------|-------------|
| Moisture | max. 8% |
| Purity | min. 99,95% |
| Oil content | ~42% |

CERTIFICATIONS

EU Bio | ISO 22000 | GMP+ | HALAL | KOSHER PARVE | IFS



Expiration period: maximum 12 months under storage conditions

Transportation: 1,000 kg big-bags | 25 kg paper bags

Origin: EU